

**KBT**

300-350MHz*2 65° 12dBi 0° Fixed Electrical Downtilt Antenna

KBT65DP1212-032FT0

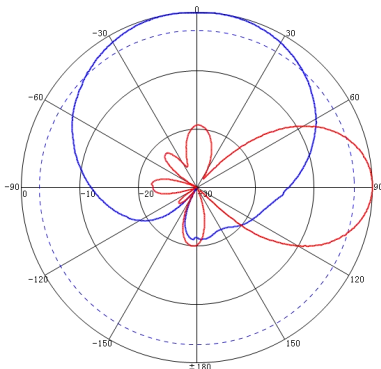
Electrical specifications

Frequency range (MHz)	300-320	320-350
Polarization	±45°	
Gain (dBi)	11	11.5
Electrical Downtilt (°)	0	
Half-power beam width (°)	78	75
Vertical power beam width (°)	44	42
Front-to-back ratio (dB)	≥20	≥22
1st Upper sidelobe suppression(dB)	≤-15	
Cross-polar discrimination (dB)	≥15 (±60° 内≥8)	
Impedance (Ω)	50	
VSWR	≤1.5	
Isolation (dB)	≥28	
Intermodulation IM3 (2×43dBm carrier)	≤-120dBc	
Maximum power (W)	500 (@50°C)	
Lighting protection	DC Grounding	

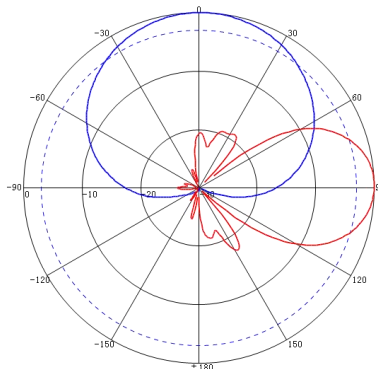
Mechanical specifications

Connector	4*N Female
Connector position	Bottom
Height/width/depth (mm)	2200*450*145
Packing size (mm)	2450*525*260
Weight (kg)	23.5
Bracket Weight(Kg)	4
Radome material and color	Fiberglass/Gray
Mechanical tilt (°)	0-10
Operating temperature (°C)	-40~+60
Rated wind velocity (m/s)	60
Suitable pole diameter (mm)	Φ50-Φ115
Mounting kit	JM-900DZA

300-320MHz: ±45° Pol.



320-350MHz: ±45° Pol.



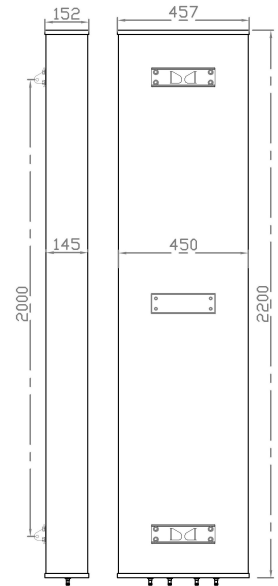
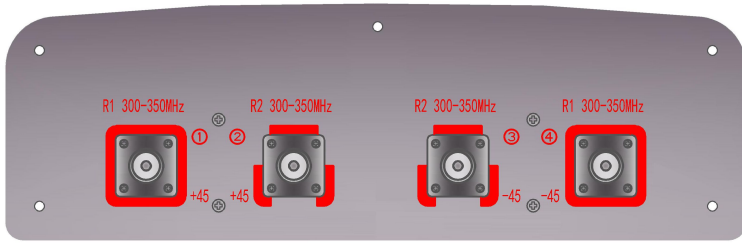
No.2 ChanxiuRoad, Foshan, Guangdong, China. 528061 Tel: +86-757-82219788 Fax: +86-757-82212072

Email: kbt@kenbotong.com Web: http://www.kenbotong.com



KBT

300-350MHz*2 65° 12dBi 0° Fixed Electrical Downtilt Antenna



Installation Sketch

